

Test your product's compliance with GlobalPlatform V2.1 & V2.2

Are you a smartcard manufacturer or a mobile network operator (MNO)? FIME has created the Global Test Suite to help you meet GlobalPlatform specifications. This efficient tool evaluates the readiness of your product to achieve GlobalPlatform card qualification. If you are a smartcard manufacturer, the Global Test Suite is the best way to save time and cost during the development of your GlobalPlatform products. If you are an MNO you will use this tool to effectively evaluate your new product before its rollout and to ensure the interoperability between the different providers. The Global Test Suite is available with different libraries according to your market:

- UICC configuration edition - *qualified*
- Basic Financial Configuration edition - *qualified*
- Mapping Guidelines Edition

Why the Global Test Suite?

Qualified

Manufacturers can use the same tool for the self testing process that FIME labs use for the qualification process.

Clear

In just a quick view you can check the compliance of your product with GlobalPlatform configurations.

Flexible

Run an automated session or choose which tests to run for which package, and which card's initial-state.

Upgradable

FIME provides an update quickly after any new GlobalPlatform test plan releases.

Thorough

Carry out step by step execution and in depth analysis of failure to thoroughly test your product.

Reporting

The tool can generate different levels of report depending on your requirements.

For more information contact us at www.fime.com/contactus/ or, depending on your region: test_tools@fime.com (for Europe and the Middle East), test_toolsAP@fime.com (for Asia and the Pacific), test_toolsLAC@fime.com (for Latin America and the Caribbean), test_toolsNA@fime.com (for North America), test_toolsIN@fime.com (for the Indian Subcontinent)

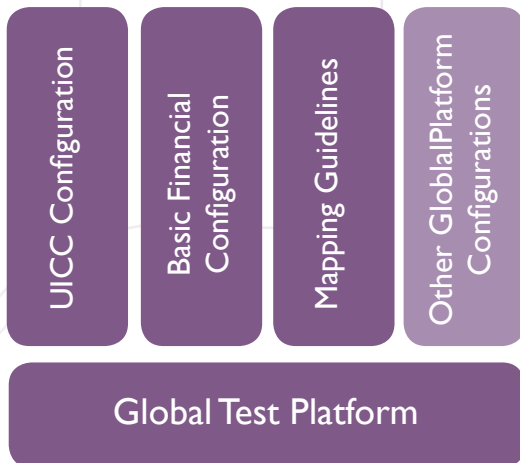
About FIME

FIME is an independent global leader in consulting and market integration services for secure chip based applications, tokens and devices within the telecom, e-payment, transport, e-identity and logistic sectors. Its international team works with developers, issuers and acquirers within these markets throughout the research and development lifecycle to provide consulting expertise on sector requirements, functional and security features and industry regulation.





Architecture



Functionalities

Settings

- Automatic detection of the PC/SC readers
- Configure tests according to card capabilities
- Select destructive/non-destructive tests and cards' initial state per package
- Perform debug or regression testing on demand
- Configure execution for when an error occurs

Test session

- Automate testing with multi-reader capabilities
- Run an external program for setup and teardown
- Set cards' initial state automatically
- Run the commands step by step in a test case
- Modify the tests according to your needs

Analysis

- Generate full or partial test reports
- View high level or detailed results summary
- Get in depth logs at functional or APDU level

Test coverage

Available libraries:

- GlobalPlatform V 2.2 UICC Configuration - qualified
- GlobalPlatform V 2.1.1 Basic Financial Configuration - qualified
- GlobalPlatform V 2.2 Mapping Guidelines - preliminary release

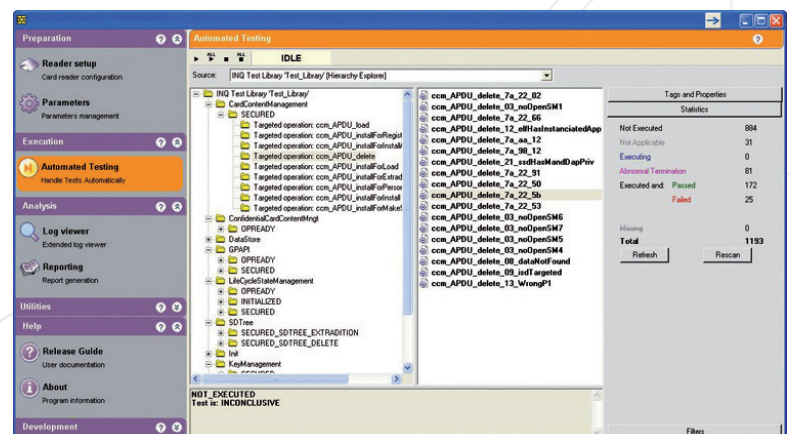
Depending on the library, tests encompass:

- Secure Messaging
- SD Tree
- SD Tree extended
- Key Management
- Card Content Management
- Confidential Card Content Management
- Data Store
- Life Cycle State Management
- Logical Channel Management
- GP API

Take your product to the next level!

Do you want to achieve GlobalPlatform card qualification?

FIME is a GlobalPlatform qualified laboratory.



The Global Test Suite's working environment