



**GREENlight**  
Functional



## Run test scripts automatically for secure documents!

Are you looking for a simple and reliable way to test your e-passports and driving licenses for Layer 6 & 7 Application solutions? FIME has developed the Greenlight Functional test solution to help with e-Passport, tachograph and driving license testing by automating test scripts processing.

The Greenlight Functional tool features an interface to automate application scripts launching for functional compliance testing of ICAO e-Passports and Driving Licenses. The tool is compliant with the official ISO 10373-6 test plan, the ICAO test plan (RF Protocol and Application Test Standard for e-Passport - part 3).

## Why the Greenlight Functional test solution?

### Fast

Greenlight Functional enables the automatic verification of the secure document application.

### Simple

The tool's interface is designed to be user friendly and easy for anybody to operate.

### Reliable

This is the same tool used by FIME's laboratory so you can achieve similar results.

### Quick analysis

The interface gives the user a direct and precise verdict for each test point, with graphical analysis.

### Multi purpose

Multiple secure documents across different markets can all be tested by the same tool.

### Reporting

When session is finished, a complete test report can be generated if required.

For more information contact us at [www.fime.com/contactus/](http://www.fime.com/contactus/) or, depending on your region: [test\\_tools@fime.com](mailto:test_tools@fime.com) (for Europe and the Middle East), [test\\_toolsAP@fime.com](mailto:test_toolsAP@fime.com) (for Asia and the Pacific), [test\\_toolsLAC@fime.com](mailto:test_toolsLAC@fime.com) (for Latin America and the Caribbean), [test\\_toolsNA@fime.com](mailto:test_toolsNA@fime.com) (for North America), [test\\_toolsIN@fime.com](mailto:test_toolsIN@fime.com) (for the Indian Subcontinent)

### About FIME

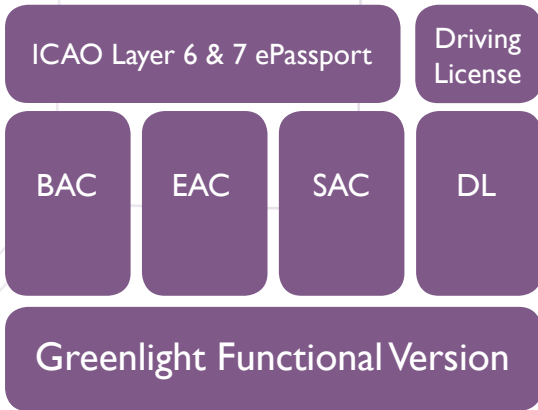
FIME is an independent global leader in consulting and market integration services for secure chip based applications, tokens and devices within the telecom, e-payment, transport, e-identity and logistic sectors. Its international team works with developers, issuers and acquirers within these markets throughout the research and development lifecycle to provide consulting expertise on sector requirements, functional and security features and industry regulation.



**FIME**<sup>®</sup>  
Enabling Business with  
IC Testing Solutions



## Greenlight Functional libraries



## GreenLight Libraries for eDocuments

GreenLight Functional includes the latest test plan and additionally uses 4 libraries of test scripts for **ICAO BAC**, **EAC** and **SAC** and **ISO Driving license**:

- **BAC** (Basic Access Control) test script defined in the following ICAO test specification: RF PROTOCOL AND APPLICATION TEST STANDARD FOR E-PASSPORT - PART 3. The test suite is fully compliant with Layer 6 - Security and Commands tests and Layer 7 - Logical Data Structure tests .
- **EAC** library (Extended Access Control). Includes test cases for machine readable travel documents with advanced security mechanisms used to protect the sensitive biometric data.
- **SAC** library (Supplemental Access Control). Conformity Tests for SAC implementation based on ICAO 9303 Part I and Compliant with EAC v1.1.
- **Driving License** library. Conformity Tests for DL implementation based on ISO 18013-4.

Future evolution to digital tachograph.

## GreenLight Functional Platform

The GreenLight Functional Platform software drives a reader, commonly known as the GreenLight Functional Version box. The GreenLight Functional Version Platform is suitable for testing all kinds of compliant ICAO e-Passport and Driving License solutions. The GreenLight Functional Version Platform is used with the libraries for debugging and application testing. The platform is already qualified and used by an accredited laboratory ISO 17025.

## Test plan summary

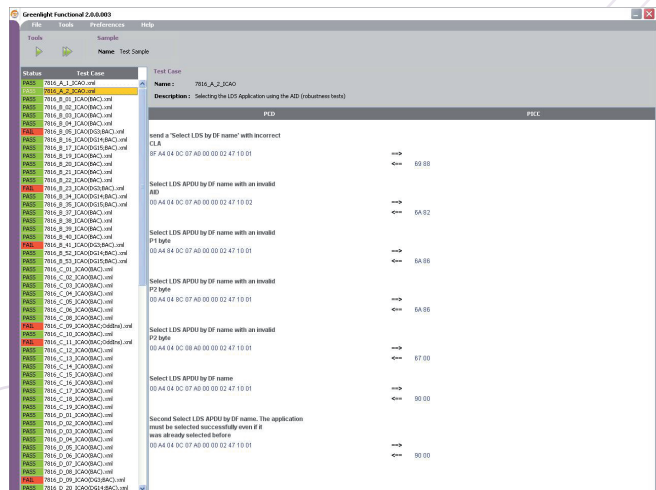
**Application Selection:** Determine the application that is destined to be tested.

**Security Conditions:** Test methods that determine whether the level of security is correct.

**File selection:** Select the files for compliance testing.

**Binary reading:** Test methods that use the binary data.

**Authentication:** The session is valid with a specific authentication method.



## Example of the Greenlight Functional tool's working environment

GreenLight Functional has been designed to help with e-Passport testing by automating test scripts processing and is used for compliance testing of e-Passport application. The tool features an interface to automate test launching and manage the tool's functionalities in an easy-to-use environment.

