

Global

SECURE ELEMENT & CLOUD-BASED SE COMPLIANCE TEST TOOL



FIME®

One Action. A billion transactions.



Prepare for accreditation with Global

REDUCE TIME TO MARKET

The success of the various high-profile OEM Pay platforms, coupled with the growing availability of Near Field Communication (NFC) smartphones on the market, is leading to the global expansion of NFC services. Compatibility and interoperability are key to providing a seamless NFC user experience to the consumer. When developing smart card, embedded Secure Element (eSE) and Host Card Emulation NFC payment applications, therefore, testing is crucial to ensure a consistent customer experience across all form factors.

COMPREHENSIVE TESTING ACROSS ALL MARKETS

FIME contributes to the relevant standardisation bodies and has developed Global to ensure the complete validation of your solution. Global enables the validation of your product, whether it is physical or cloud-based, to support payment, telecom and identity applications. By integrating qualifications from multiple authorities, industry players can analyse how an application behaves on a secure element:

- American Express™
- Discover™
- eftpos
- EMVCo™
- GlobalPlatform®
- GSMA™
- JCB™
- Mastercard®
- PURE
- RuPay
- UnionPay™

+ KEY BENEFITS

- Test with an officially qualified test tool, as used in accredited laboratories.
- Ensure your solution is compliant throughout development.
- Use for cross-market Level 2 approvals.
- Reduce time-to-market with internal testing.

+ KEY FEATURES

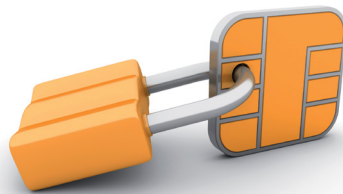
- Easy to use interface.
- Execution of selected test cases.
- Multi-level and automated report generation.
- Easy upgrade and scalable.
- Automatically import test plans updates.





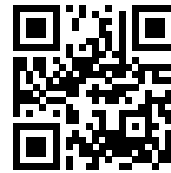
Global

SECURE ELEMENT
& CLOUD-BASED SE
COMPLIANCE TEST
TOOL



LEARN MORE

FIME CONTACTS



www.fime.com/global.html

Americas ② fimeinsidesalesnalac@fime.com
Asia Pacific ② fimeinsidesalesap@fime.com
China ② fimeinsidesaleschina@fime.com
EMEA ② fimeinsidesalesemea@fime.com
India ② fimeinsidesalesa@fime.com
Japan ② fimeinsidesalesjapan@fime.com
Korea ② fimeinsidesaleskorea@fime.com

COMPONENTS AND TEST SUITES

Test libraries

TELECOM	ETSI	<ul style="list-style-type: none"> CAT_TP
	GlobalPlatform	<ul style="list-style-type: none"> eUICC compliance test suite (based on GSMA) eUICC interoperable profile package UICC GlobalPlatform Configuration Contactless extension with memory management SWP / HCI Amendment B / SCP81 Benchmark Common implementation Secure Element Configuration Secure Element Access Control
PAYMENT	American Express	<ul style="list-style-type: none"> Contact / contactless mobile / HCE
	Discover	<ul style="list-style-type: none"> Contactless / mobile / HCE
	eftpos	<ul style="list-style-type: none"> Contact / Contactless
	EMVCo	<ul style="list-style-type: none"> AAUI PPSE
	GlobalPlatform	<ul style="list-style-type: none"> Basic Financial Configuration Mapping guidelines Benchmark Common implementation Secure Element Configuration
	JCB	<ul style="list-style-type: none"> Contact / contactless / mobile / HCE
	Mastercard	<ul style="list-style-type: none"> MCBP 1.0 / 1.0+ / 2.0
	PURE	<ul style="list-style-type: none"> Contact / contactless / HCE
	RuPay	<ul style="list-style-type: none"> qSPARC contact / contactless
	UnionPay	<ul style="list-style-type: none"> Contact / contactless Card personalization
IDENTITY	GlobalPlatform	<ul style="list-style-type: none"> ID Configuration Benchmark

Test coverage

Depending on the library, the tests encompass:

- UICC - eUICC
- Banking transaction management
- Secure messaging
- SD Tree, SD Tree extended
- Key management & data store
- Card content management
- Confidential card content management
- Life cycle state management
- Logical channel management
- Proximity Payment System Environment
- GlobalPlatform API
- Contactless extension
- SD memory quota
- Secure channel: SCP02, SCP03, SCP80, SCP81
- Level 1 SWP / HCI

LABORATORY SERVICES

FIME is a GlobalPlatform® qualified laboratory and accredited by American Express, Discover Network, EMVCo, JCB, RuPay, UnionPay.

Technical specifications

Tool modes

- Standard mode allows you to use the official test plans provided by FIME.
- Publisher mode allows you to automatically import GlobalPlatform test plans and updates.

Functionalities

Import

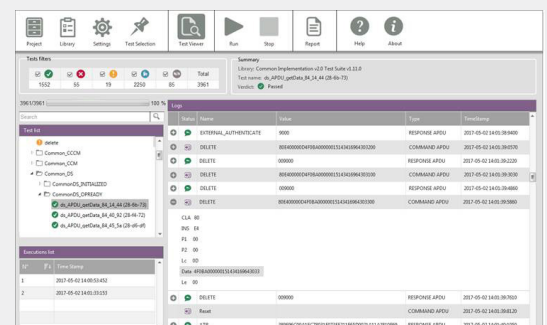
- Automatic detection of the PC / SC readers.
- Configure tests according to card capabilities.
- Select destructive / non-destructive tests and card initial state per package.
- Perform on demand debugging and regression testing.
- Configure execution for when an error occurs.

Test session

- Execute a single test, a group of tests, or a complete test plan.
- Automate testing with multi-reader capabilities.
- Run an external program for setup and teardown.
- Automatically set card initial state.
- Run step-by-step commands in a test case.
- Modify the tests according to your needs.

Analysis

- Generate full or partial test reports.
- View a high-level and detailed results summary.
- Get in-depth logs at a functional and APDU level.



Global execution environment

What's in the box?

Depending on the libraries selected, the following hardware devices are necessary to run the tests:

- PC / SC reader.
- Smartware Nano or MP65.
- Keolabs ContactLAB or MP300 TC3.