

EVAL 4dev

LEVEL 2 PAYMENT TERMINAL KERNEL AUTOMATION TEST TOOL



FIME[®]

One Action. A billion transactions.



Speed up the design of your kernels with EVAL 4dev

BRING YOUR PRODUCTS TO MARKET QUICKLY AND EFFICIENTLY

The payment terminal market is moving fast. Kernel, mPOS and terminal developers need to bring their solutions to market quickly to ensure seamless contact and contactless transactions, and security for end-users.

Bringing these products to market efficiently, quickly and cost-effectively is a key challenge for the industry, and reducing lead time for development projects gives vendors a competitive edge.

FULLY AUTOMATED LEVEL 2 KERNEL CLOUD-BASED TESTING

EVAL 4dev is a cloud-based service that enables users to validate EMV Level 2 kernels anytime, anywhere.

It is a cloud-based service which confirms that the software applications embedded in EMV payment terminals or mPOS solutions align with the latest industry specifications. This cuts project times and costs by allowing development teams to ensure their solution is compliant throughout the pre-certification stage, reducing the risk of failure during formal certification testing.

In addition, our consulting and support services provide customers with FIME's extensive experience and expertise to facilitate kernel software development and debugging.

+ KEY BENEFITS

- Know test results from early development stages.
- Analyze 20 times faster than other test tools.
- Shorten development time.
- Save development costs.
- Speed-up time to market.

+ KEY FEATURES

- Fully automated testing.
- Scheme's complaint test cases.
- No need to purchase hardware.
- Cloud-based testing.
- Test anytime, anywhere.
- Flexible, scalable and simple to use.





EVAL 4dev

LEVEL 2 PAYMENT TERMINAL KERNEL AUTOMATION TEST TOOL



LEARN MORE

FIME CONTACTS



<https://www.fime.com/products/functional-level-2/level2-terminal-kernel-cloud-based-testing.html>

- Americas fimeinsidesalesnac@fime.com
- Asia Pacific fimeinsidesalesap@fime.com
- China fimeinsidesaleschina@fime.com
- EMEA fimeinsidesalesemea@fime.com
- India fimeinsidesalesa@fime.com
- Japan fimeinsidesalesjapan@fime.com
- Korea fimeinsidesaleskorea@fime.com

DESCRIPTION

The EVAL 4dev is a fully-automated test tool and very simple to use. It allows developers to test a kernel at the early development stage before integrating into a terminal device. The pure software-to-software testing can ensure your software kernel without any hardware.

Manufacturers benefit from this fully-automated test tool to confirm your overall terminal kernel is compliant throughout the pre-certification process in a super efficient way, even if incremental updates and development have taken place.

During the testing process, the kernel source code remains on the customer's computer and only transaction messages will be performed through remote exchange with EVAL 4dev servers.

The service is fully monitored by FIME's teams to ensure the quality and security.

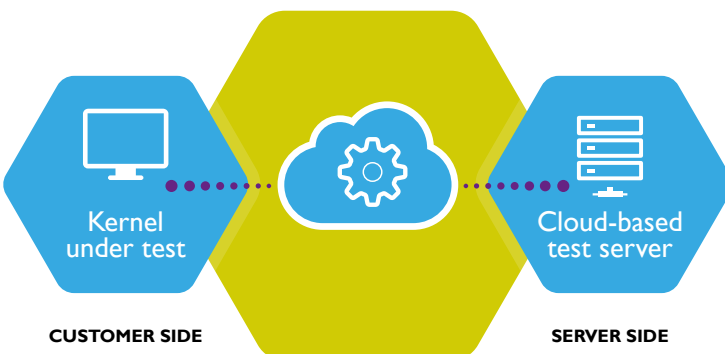
Contact kernel testing

EMVCo	• EMV Contact
--------------	---------------

Contactless kernel testing

American Express	• ExpressPay
Discover Network	• D-PAS
JCB	• J/Speedy
Mastercard	• Mastercard contactless
UnionPay	• QuickPass
Visa	• payWave

EVAL 4dev test environment



Why choose FIME?

Consulting services by experts

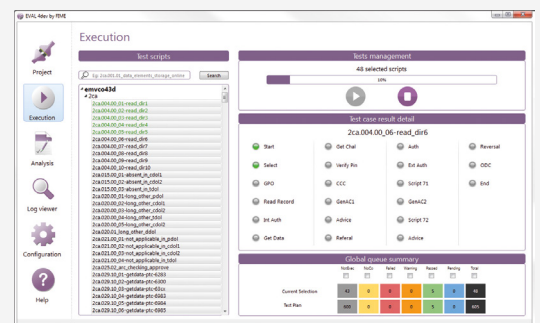
To aid kernel software development and debugging, FIME offers its extensive experience and expertise to customers in the form of consulting and support services.

- Specifications and test plans interpretation.
- Implementation support.
- Identification and validation of applicable test cases.
- Fail verdicts analysis.
- Kernel debugging support.

FIME, your end-to-end partner

The combination of the EVAL 4dev service for kernel debugging, the EVAL test suite for terminal certification testing and FIME's laboratory services offer a complete terminal kernel development and certification solution for a comprehensive list of required industry standards.

FIME is currently accredited by, and can deliver services for American Express, Discover Network, EMVCo, JCB, Mastercard, UnionPay and Visa.



EVAL 4dev execution environment

More benefits

- Perform non-regression testing and analysis faster.
- Test throughout the development stage.
- Automate your test session.
- Multimodal: contact and contactless.
- Automated local log saving.